

### Quin Street

A new residential street with high quality public realm provisions including improved cycle and pedestrian facilities.

### Market Square

A new beating heart of Leyland providing opportunities for events, gatherings and socialising.

### Churchill Way

Improved car parking facilities serving Hough Lane and Chapel Brow plus improved pedestrian and cyclist circulation.

### Chapel Brow

Improved public realm including significant pedestrian and cyclist enhancements and street tree and shrub planting.

### Hough Lane

Significant public realm improvements including widening of pavements and large areas of street tree and shrub planting.

### Church Place

A new public space and focal point on Hough Lane centred around the United Reformed Church and new commercial building.

### Museum Place & Thurston Rd.

Improved public realm to provide clear connections between Hough Lane and the Commercial Vehicle Museum.





The Market Square will create a new social hub and beating heart for Leyland.

The space will offer a variety of experiences from food markets and festivals to casual outdoor dining and a meeting space for both residents and visitors alike. New planting within the square will significantly increase the green infrastructure in this area and add to the already increased environmental benefits.

### Outdoor Dining

Areas of external seating to offer alfresco dining for restaurants/bars provisions

### Soft Landscape

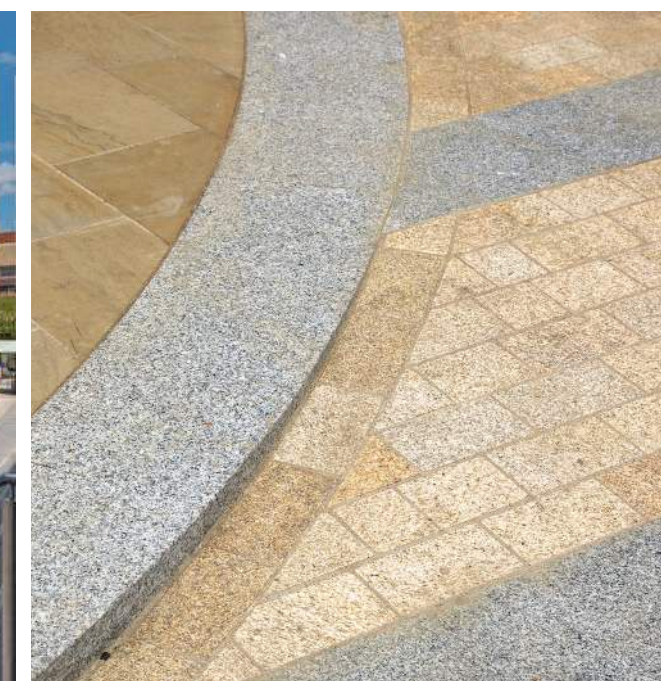
Large planting beds to provide soft landscape areas within the square and provide areas of seclusion. Beds will include large tree planting to offer areas of dapple shade using trees such as Silver Birch (*Betula pendula*).

### Active Boundaries

Buildings with active frontages will provide life and interaction in the square through the provisions of restaurants, bars and new permanent market stalls.

### Visual Connectivity

Clear and direct access into the square will be created from the main focal points. These will provide a visual connection from areas such as Hough Lane into the square framing the activity and attracting people into the space.



- 1 - Proposed visuals of Market Square showing new areas of recreation.
- 2 - Example of mounded planting beds to create interest within a public space.
- 3 - Suggested paving within Market Square. Buff granite in various plan sizes and finishes.
- 4 - Reclaimed sleeper benches to reflect industrial heritage.







Church Place will offer a new 'Pocket Park' within the centre of Hough Lane creating a new focal point in this area within the setting of the existing United Reformed Church.

Existing space in front of the United Reformed Church and 51-55 Hough Lane will be redeveloped to create a new green public space on Hough Lane. This 'pocket park' will be focused on delivering large areas of planting and trees alongside small areas of seating and outdoor dining to enhance the public realm offer in this location.

### Increased Visibility

The proposals seek to reduce the scale of the adjacent building to increase the visibility and prominence of the Church on Hough Lane. Opening up views of the Church from further away will enhance the visual impact the Church has within this area.

### Improved Setting

The area surrounding the Church will be softened with textural planting areas and wider pavements to provide a unique landscaped setting. The significant reductions of hard landscaping will further enhance the setting of the Church and the wider Hough Lane.

### Soft Landscape

Large areas of soft landscaping will be introduced to enhance the green infrastructure along Hough Lane. Church Place offers a unique opportunity to provide a 'Garden Style' public space.



- 4 - Typical planting styles with native qualities reflecting the pioneering plants found locally.
- 5 - Offers of outdoor dining within the Market Square and Church Place
- 6 - Current view of the United Reformed Church with existing built form to the foreground.
- 7 - Opportunity to include seasonal features such as a statement Christmas Tree and markets.





The Quin Street development will provide a new residential hub within the heart of Leyland.

Quin Street will focus on delivering a pedestrian and cycle dominated zone with wide pavements, significant traffic calming and connections into north Leyland through the introduction of a new pavement across Bannister Brook.

#### New Connections

A new pedestrian and cycle connection over Bannister Brook to the north of Quin Street will provide a direct route to north Leyland further promoting the use of sustainable transport methods and reducing travel distances.

#### Sustainable Car Parking Provisions

A new car park to the north of Quin Street will provide electric charging points and a large number of covered cycle stores to promote sustainable transport alongside an increased number of accessible parking bays for visitors.

#### Residential Housing

New residential dwellings along the length of Quin Street will provide a change of character to the industrial nature of the existing site. The residential development will reference the current adjacent character of Hough Lane and will bring new life and activity to this space.

#### Pedestrian and Cyclist Dominance

A new 3m wide pavement extending along the length of Quin Street will provide both cycle and pedestrian access along this street and across Bannister Brook. Significant traffic calming measures including raised speed tables, low kerbs, rumble strips and one-way roads will be introduced to control the vehicular access in this area making it more pedestrian and cycle focussed.



- 1 - Shared surface and enhanced pedestrian pavements. Derwenthorpe, York.
- 2 - Small pocket park. Derwenthorpe York
- 3 - Ornamental street planting. London, UK.
- 4 - Typical section through Quin Street and Eckroyd Street car park.





Hough Lane will be re-imagined to create a new, high quality public realm to reflect the character and activity along this high street.

The development will provide wider pavements and use cohesive high quality paving materials, large areas of new street planting, avenue tree planting and new street furniture to provide holistic design across the length of Hough Lane and improve the environment for visitors and residents.

### Cycle Provisions

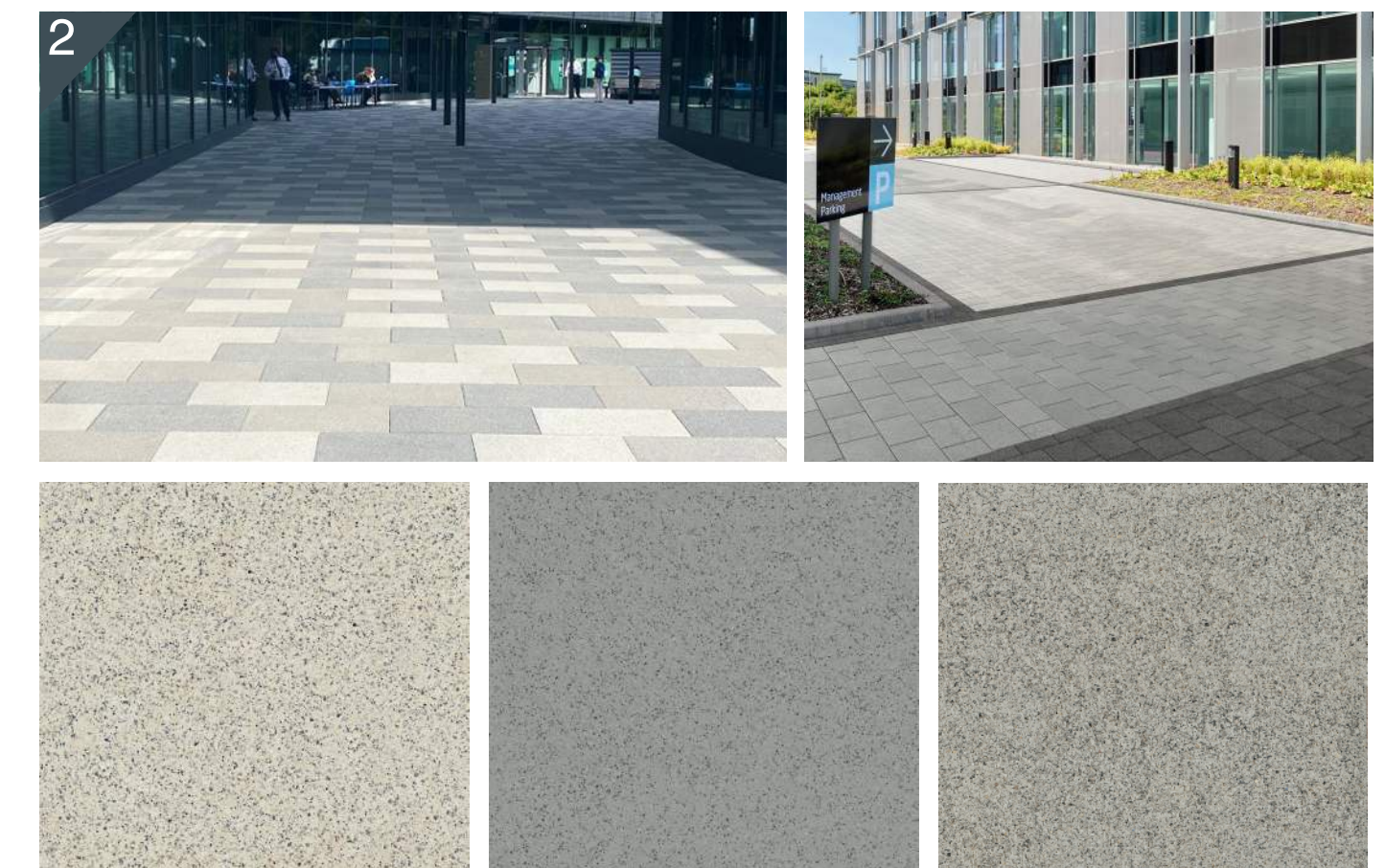
Several obstructions including on-street parking will be removed along Hough Lane to create a clear and safe space for cyclists using the highway. Where drop off and loading bays are present, these will be set back into the wide pavements to reduce any obstruction to a minimum. In addition a number of cycle parking provisions will be included along Hough Lane to provide short and long stay cycle parking.

### Street Planting

New street planting areas and tree planting will enhance the quality of the streetscape. Opportunities for rain garden provisions within the planting beds will add to the sustainable qualities of the streetscape.

### Traffic Calming

Significant traffic calming measures will be introduced along Hough Lane to reduce the traffic dominance including raised tables, low kerbs, rumble strips and chicanes. Roadways will be narrowed to provide increased pavement provisions along the length of Hough Lane and street parking will be reduced to drop off, loading and accessible parking only.



- 1 - Example seating and feature benches to Hough Lane.
- 2 - Sample paving materials and finishes
- 3 - Street planting and rain gardens, London, UK.
- 4 - Gateway paving and traffic calming measures.

### Gateway Entrances

The east and west entrances to Hough Lane will include raised speed tables to slow traffic on entrance to Hough Lane and will be repaved in a consistent material to create a sense of place and identity.

### Holistic Paving Design

The paving design along Hough Lane will focus on providing a cohesive scheme throughout. Pavements and roadways will be re-paved in a consistent material with subtle changes to distinguish key areas.







Chapel Brow and Churchill Way roundabout will be significantly re-designed to create a new pedestrian and cycle dominated environment.

Wider pavements and a segregated cycleway will provide a safe and user friendly environment benefiting both visitors, residents and business owners. Large areas of new planting will further add to this creating a sustainable and environmentally conscious public realm

Churchill Way roundabout will provide a new shared surface around its perimeter to offer users the benefit of a off road cycle provision to access Hough Lane.

### Improved Cycle Provisions

This scheme will focus on cycle safety and will provide safe provisions for both north and south bound cycle traffic. A new north bound cycle lane will be provided to facilitate users traveling in this direction to the station and beyond with south bound cyclists able to use the roadway.

A new shared surface will be provided around Churchill Way roundabout to give cyclists opportunity to avoid busy vehicular traffic using the roadways. Existing crossings will be improved to provide safe crossing points for both pedestrian and cyclists with cyclists re-joining the roadway at Hough Lane.

### Improved Pedestrian Provisions

Existing pavements will be significantly widened to provide 2-4m width on both sides of the road to create a safe and open environment. Several crossing points will be provided along Chapel Brow with small raised speed tables and pavements will be paved using a consistent material to match those proposed on Hough Lane.

### New Planting

Significant areas of new planting will be incorporated along Chapel Brow between the pavement and cycleways to separate pedestrians and cyclists from the vehicular movement creating a pleasant public realm environment from visitors and residents.

### Traffic Calming

Traffic flow will be revised to provide a southerly, one-way direction from Golden Hill Lane with several raised speed tables and chicanes to restrict and slow the movement of traffic through this area. Large sections of on-street parking will be removed to further reduce the volume of vehicular access required with drop off and accessible parking retained.

### Gateway Entrance

Churchill Way car park, the roundabout and the eastern entrance to Hough Lane will be re-designed to provide a clear and focussed entrance into the heart of Leyland. Large areas of new planting will be provided to create a green gateway along with a cohesive paving design and new gateway feature such as sculpture and feature tree planting. The existing planting on Churchill Way roundabout will also be removed and replanted to open up views across the two shopping centres of Leyland.



- 1 - Segregated cycle lane.
- 2 - Street planting and rain gardens.
- 3 - Example gateway feature / sculpture.